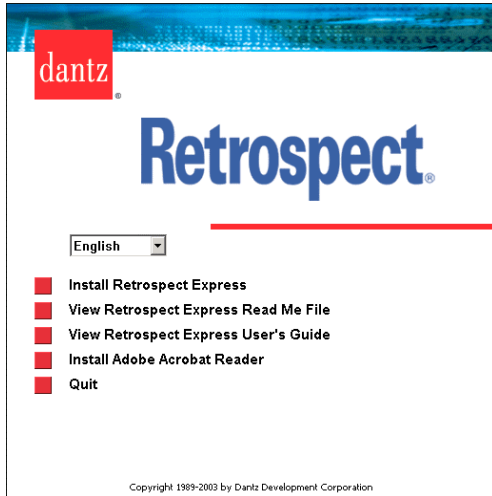


Software Installation of Retrospect 6.5

FOR WINDOWS 2000/XP

1. Getting started

To start, simply insert the Retrospect installation CD into your CD ROM drive.



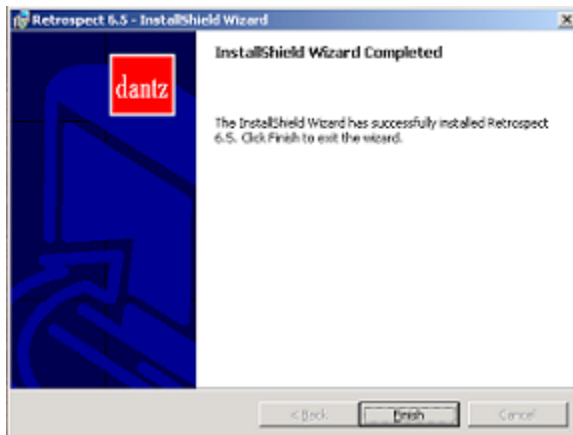
2. Installing the software

Once the CD is inserted, the installation window will appear. Click “Install Retrospect”, this will start the installation Wizard.



3. Running the Wizard

Follow the installation instructions and install the software by going through the Wizard.



4. Completing the installation

Click finish to complete the installation procedure, your computer will prompt you to restart. This is necessary for proper installation of the software. When starting the program for the first time, you will be asked for a license key. License key is located on the back of the CD envelope.